

FRAMI FORMWORK LIGHTWEIGHT PANEL SYSTEM



Frami Formwork is a man handleable formwork system that is perfect for foundations, bases and walls. The system has a robust galvanized frame and a safe working load of 50kN/M².

Frami Formwork is versatile and flexible, so you can quickly form any layout with it. The panels can be fixed together at any point around the frame, quickly and safely using Frami clamps.

The panels are 120 and 150 cm high with a range of fractional widths to form any length of shutter required.

“Frami Formwork” is a registered Doka GmbH trademark



FRAMI FORMWORK LIGHTWEIGHT PANEL SYSTEM

| Product Description | Heading |
|-----------------------|---|
| Standard Panel Widths | 30 45 60 75 90 cm |
| Panel Heights | 120 150 cm |
| Universal Panel Width | 75 cm |
| Profile Thickness | 9.2 cm |
| Form Lining | Plywood |
| Lining Thickness | 15 mm |
| Average Weight | 32 to 36 kg (including connection parts) |
| Max Concrete Pressure | 50 kN/m ² |
| Corrosion Protection | Fully Galvanized |
| Standard Connection | Frami Clamp Frami Adjustable Clamp |
| Inside Corners | 20 x 20 cm |
| Hinged Corners | 25 x 25 cm |
| Outside Corners | 9.2 x 9.2 cm |
| Special Features | Easy to manhandle yet sturdy enough for large area forming. Can adapt to any structure thanks to its logical system grid. Integrated safety with Formsafe Edge Protection |

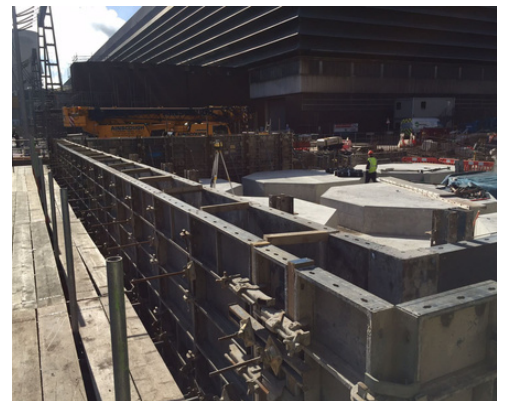
Advantages



Capable of taking loads of up to 50kN



Cost effective due to its high number of repeat usage.



Manhandleable steel framed formwork for foundations, walls and columns.