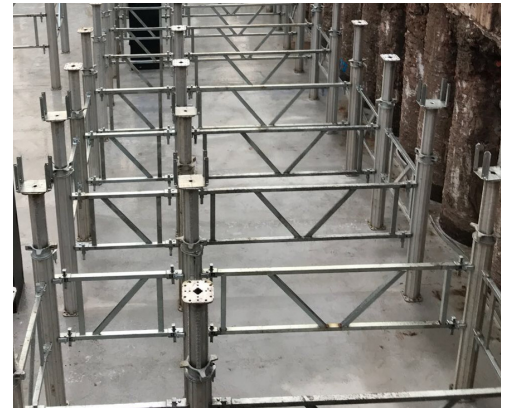
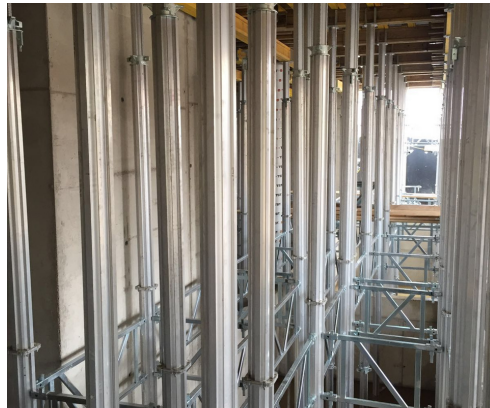


# ALULIGHT PROPS

## BS EN 16031



Alulight Props are lightweight aluminium props that come in a variety of sizes to enable many different propping heights up to and above 12 metres. This means ease of handling and speedy erection of support falsework.

Alulight Props can be used individually or as towers when using steel connecting frames. The heavy load capability up to 100kN per prop means minimal quantities of props can be used for any given area. The steel connecting frames are made in several different sizes meaning props can be assembled as towers with predetermined prop centres to suit different slab thicknesses.

# ALULIGHT PROPS

## BS EN 16031

Product description	Heading
Prop heights	120   250   350   480 cm
Steel Frame lengths	75   100   150   200 cm
Steel Frame connection	Integrated hammer wedge
Max leg load	100 kN
Application range	Single prop   Shoring tower   Falsework   Floor tables
Special connections	Scaffold couplers
Special Features	2 basic components High leg load capacity Steel Frame connection Connectable props for increased length Threaded collar for fine adjustment

### Advantages



Aluminium components make the props strong yet lightweight.



High load capacity reduces the amount of equipment required.



Compatible with H20 Timber Beam and MKII Soldiers.