

CL25 ACCESS BRACKET

HEAVY DUTY CANTILEVER FRAMES



CL25 Access Brackets provide safe access and formwork support for lifted pours.

With a safe working load of up to 25kN CL25 Brackets are supported from existing tie points or by using cast in anchors. The frames triangular design enables simple installation whilst also reducing the risk of damage to concrete finishes.

Assemblies can be built on the ground before being lifted into place. to support formwork and site personnel. A secure work area can be created with toe boards, decking and hand rails.

CL25 Access Brackets are also used to simplify the process of fixing soffit edge formwork.

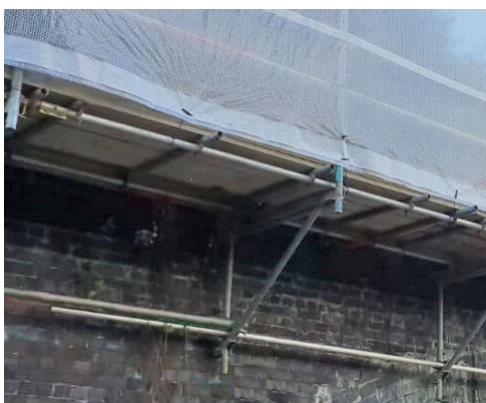
CL25 ACCESS BRACKET HEAVY DUTY CANTILEVER FRAMES

Product Detail	Information
Max safe working load	25 kN
Max horizontal spacing	240 cm
Special Features	Single fixing point to concrete. Can accommodate trailing work platforms. Can be supported from tie fixing points. Provides safe working decks at any height. Can form outside corners for continuous decking. Can be formed at ground level.

Advantages



25kN safe working load enables heavy duty cantilever frames.



Provides safe working decks at any height.



Can be formed at ground level and lifted into place.