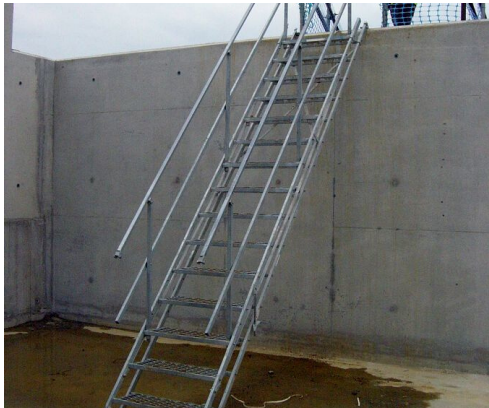


COMBISAFE SITE STAIRWAYS TEMPORARY ACCESS SOLUTION



The Combisafe Site Stairway offers a simple, safe and practical solution. The Stairways are quickly and easily installed on site, straight off the back of transport, and are ready to use in minutes.

Set up at between 25° and 50° Site Stairways are used facing forward, and site operatives can carry small tools, equipment, and materials in safety and comfort.

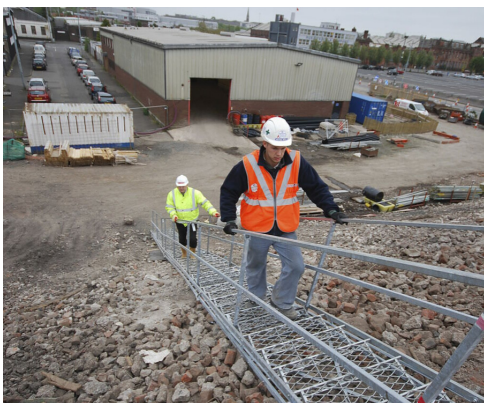
Combisafe Site Stairways can be set up on table forms, in service ducts, around the perimeter, or elsewhere, and protect the buildings stairs from the wear and tear of the construction process.

Combisafe Site Stairways fully comply with EN 12811, as Temporary Work Equipment for access between levels on scaffolding.

COMBISAFE SITE STAIRWAYS TEMPORARY ACCESS SOLUTION

Product Detail	Information
Stairway Steps	3 6 9 12 15 18
Stairway Folded Length	1.03 1.84 2.65 3.46 4.27 5.08 m
Stairway Weight	17 31 47 57 82 104 kg
Attachments	Handrail Slab Attachment Scaffold Attachment Universal Support Lattice End Beam Lattice Mid Beam
Relevant Standards	EN 12811
Benefits	<ul style="list-style-type: none"> • Lengths can be joined in a single run up to 7.50m • Double handrail on both sides, • Automatically adjusts to the correct height to meet the angle of the stairs. • Treads will always be horizontal • The locking mechanism ensures Stairway stability • Stringers are shaped to prevent slipping • Can be folded flat for ease of transport

Advantages



Stairway permits occasional passing if required due to its width of over 750mm



Treads have a coarse expanded metal surface for grip, which also clears muddy footwear in use



Durable galvanised finish as standard