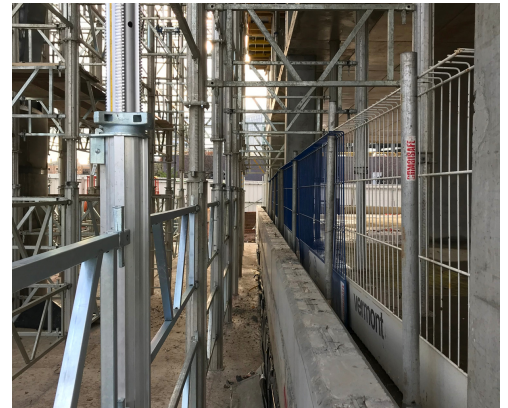


COMBISAFE BARRIER SYSTEM

EDGE PROTECTION FOR CIVIL ENGINEERING



With major infrastructure projects becoming more commonplace over the next few years, each presents its own unique challenges for safe working at height. The Combisafe range of flexible and innovative protection solutions combined with an intimate understanding of the sectors we serve and full engineering support services, allows us to effectively support our clients' work at height challenges by offering robust, compliant, and cost effective Edge Protection solutions

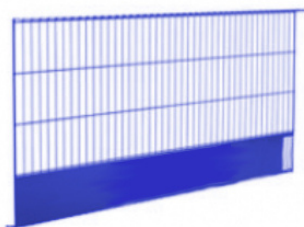
The barrier is light to carry and easy to manoeuvre for improved transport and on-site handling.

Combisafe Steel Mesh Barriers are designed in compliance with EN13374, Class A, B & C and has been the forerunner in edge protection for over two decades.

COMBISAFE BARRIER SYSTEM

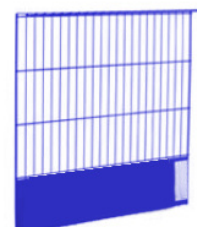
EDGE PROTECTION FOR CIVIL ENGINEERING

Formsafe Barrier 260



Lightweight, versatile barrier that provides hard-mesh coverage with impact-absorbing capacity. Each weld can withstand a force of 500kg. Designed with closed return for greater debris containment, and with reinforced edges to prevent site damage. Guardrails, toeboard and debris mesh in one product.

Formsafe Barrier 130



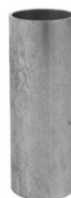
Lightweight, versatile barrier that provides hard-mesh coverage with impact-absorbing capacity. Each weld can withstand a force of 500kg. Designed with closed return for greater debris containment, and with reinforced edges to prevent site damage. Guardrails, toeboard and debris mesh in one product.

Flexi Attachment



Used to provide a post attachment at an adjustable offset, up to max. 350mm from a vertical surface. Used in beam webs, on walls, façades, shaft sides, or slab edges etc. The bolt is pre-fitted to the base material and the keyhole used to initially secure the attachment until the fastener is tightened.

Anchor Socket



Weld directly to steel beams and structures to support edge protection posts and barriers.

Plastic Sleeve



The simplest pre-planned attachment. The Plastic Sleeve is cut to the required length and is fitted with the Plastic Plug. This is then cast-in to the slab in the required position.

Steel Mesh Barrier Holder



The Steel Mesh Barrier Holder allows the barrier to be installed at any height on the Safety Post, facilitating work under the barrier, and enabling the barrier to be parallel with the working surface at all times.

Steel Jaw Clamp



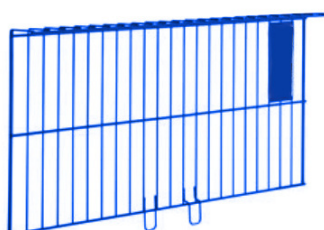
The Steel Jaw Clamp ensures a secure attachment to steel beams and columns. The jaws and the spacer can be re-positioned on the body to increase the offset or to attach in both the horizontal and vertical plane. The Steel Jaw Clamp uses the same body as Multi Clam.

Safety Posts



When mounted in the various attachments and combined with the Steel Mesh Barrier, forms a safe fall prevention solution. Can be used on its own or with Steel Mesh Barrier Holder. Available in a variety of lengths.

Steel Mesh Barrier Make-up



Used together with the Steel Mesh Barriers to gain extra coverage height. Available for both Formsafe Barrier 260 and Formsafe Barrier 130.

Steel Mesh Barrier Hinge



A small and simple device to fasten Steel Mesh Barriers together. The Steel Mesh Barrier Hinge will also allow easy access. Corners can be created at any angle between 76° and 284° when attached to the end of the barriers, but can also provide angled corners at any position along the barrier.

COMBISAFE BARRIER SYSTEM

EDGE PROTECTION FOR CIVIL ENGINEERING

Gap Closer



The Gap Closer is used to fill gaps, voids, returns, and to protect against sharp ends and edges. It will fill gaps between 100mm and 500mm. It is held in place by four straps, and forms a smooth curve between the attached edges, protecting sharp corners and solving a vast range of edge protection continuity problems.

Stair Attachment



Used to support systems on stairs, permitting access to both the top surface and the soffit. Two spurs/studs are pushed into the concrete during installation stabilising the single point fixing. The Safety Post is positioned 90mm off the edge of the stairs, creating space for finishes and nosings.

Stair Angle Attachment



Accessory to the Multi Clamp to hold the clamp in place on the angled soffit of the stairs. The tube is fitted to the clamp's lower leg, and the hook engages on the step riser. This restrains the clamp assembly.

Stair Barrier



The Stair Barrier is designed for staircase slopes of 30° and provides continuous edge protection along staircases. It can also be raised to allow access to work on the outside edge of the stair unit. Stair Barriers can be fitted to either side of the staircase.

Aluminium Beam Attachment



Used to attach to aluminium soffit form beams and proprietary forming systems. The attachment is quickly and easily secured to the form beam by hammering the wedge home. It can then be used as both a Safety Post Attachment and a Shuttering Support using the nailing plate.

Balcony Attachment



Designed to use cast-in channels or the fixings for the permanent handrails. The fixing slots in this attachment can accommodate large variations in diameter and spacing.

Bridge End



Primarily used as an edge protection attachment for bridges utilising the bolts for the permanent bridge barrier, but also works in many other applications. Can also be installed using suitable drilled or cast-in anchors.

Bridge Parapet Plate



Adjustable steel plate that can be fixed directly outboard of the existing parapet prior to removal. Use with the Bolt Socket

Eaves Attachment (Adjustable)



An adjustable Eaves Attachment for roof edge protection. The bolt accommodates large variations in the width of the support and the adjustable post holder allows flexibility in positioning.

Facade Bracket



COMBISAFE BARRIER SYSTEM

EDGE PROTECTION FOR CIVIL ENGINEERING

Steel Clamp



A small stable clamp attachment for steel. It can be mounted on the flanges of large steel beams, plate girders, or directly to flat plates like road plates. Grips to steel between 10mm and 50mm thick. It can be used vertically or horizontally.

Variable Flexi Attachment



Based on the same frame as the Variable Angle Attachment. The post attachment can now be adjusted up to 970mm and angled in the required position. Suitable for assembly on façades with a long roof extension.

Verti Clamp



An attachment that clamps to narrow members from 0-150mm thick like steel sheets. This clamp also has reversible jaws. The heavy-duty coarse thread is quick to set, and tightened using a hammer. It is also robust to withstand site treatment. Can be mounted both vertically and horizontally.

Variable Angle Attachment



An attachment for pitched or flat roofs, slabs, slab edges, walls etc. The post socket can be set at 5 different angles between 0° to 90° to the base plate, and by moving the bolt, also at 180°.

Flat Sheet Roofing Attachment



For mounting to the standing seam on suitably sheeted roofs. The attachment is easily clamped to the seam, and the angle of the Safety Post Attachment is then adjusted to the gradient of the roof.

Front Attachment



Mounted vertically and used both as an edge protection support and as a shuttering support. Using a single fixing point a wide range of applications can be covered. Fixing methods include using form ties, threaded bar, drilled fixings, and cast in sockets.

Jamb Attachment



Fitted to vertical surfaces from slab edges and upstands to walls, shaft sides and reveals. Leaves the floor surface free for other work. Fixed with 2 No M12 bolts.

Multi Clamp



This most versatile attachment covers a wide range of applications. It can clamp horizontally or vertically over a thickness ranging from 20mm up to 510mm using the reversible jaw. The heavy-duty coarse thread is quick to set,

Multi Foot



Used for horizontal surface applications, most commonly at the slab edge. The three points of support allow accurate installation on an uneven surface and ensure that the anchor load is correctly controlled. The Multi Foot can be through fitted using a variety of anchors appropriate to the base material.

Shuttering Attachment



Mounted vertically and used both as an edge protection support and as a shuttering support. Can accept greater loads than the Front Attachment. The removable feet are adjustable and can be re-positioned. The Shuttering Attachment is secured using the tie holes.

COMBISAFE BARRIER SYSTEM

EDGE PROTECTION FOR CIVIL ENGINEERING

Timber Beam Attachment



Used to attach to timber soffit form beams and proprietary forming systems. The attachment is quickly and easily secured to the form beam by hammering the wedge home. It can then be used as both a Safety Post Attachment and a Shuttering Support using the nailing plate.

Bridge Edge Attachment



A compact and rapidly deployed attachment, designed primarily for construction joints on bridgeworks, and other starter bar applications. The attachment clamps onto the reinforcement where it protrudes from the concrete, and can also be used on timber beams. It can be reversed to change the offset from the slab edge to the post. The clamping width is 10-100mm and the maximum height that can be clamped is 200mm. Once dismantled, this attachment can also be fixed directly to a vertical face.

COMBISAFE BARRIER SYSTEM

EDGE PROTECTION FOR CIVIL ENGINEERING

Product Detail	Heading
Barrier Lengths	130 260 cm
Barrier Heights	115 cm
Mounting System	Timber Beam Attachment Aluminium Beam Attachment Multi Clamp Adapter Stair Attachment Multifoot Flexi Attachment MKII Slab Edge Bracket and more...
Handrail post fixing	SMB holder
Application Range	Concrete slab concrete stairs concrete balconies slab formwork steel joists
Relevant norms	EN13374 A, B and C
Special features	<ul style="list-style-type: none"> • Closed Toeboard • Reinforced edges • Steel mesh protection with impact absorbing capacity • Weighs under 20kg

Advantages



Lightweight, versatile system for speedy erection



Quick to disassemble without specialist skills on-site.



Meets all European regulations for edge protection.