

# COMBISAFE BARRIER SYSTEM EDGE PROTECTION FOR TIMBER CONSTRUCTION



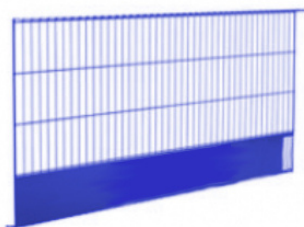
With timber construction undergoing resurgence across the world as developers rediscover its ease, economy, sustainability and visual appeal, the challenge for safer working at heights has been to find a safety system compatible with the unique qualities of timber as a building material.

In response, Formwork Direct are able to offer a range of Combisafe products specifically designed to meet the unique challenges of timber frame construction, offering innovative attachments for the safe and secure fixing of barrier protection to wood and timber form beams and soffit edges of all kinds

# COMBISAFE BARRIER SYSTEM

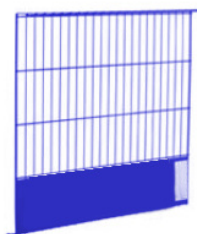
## COMPONENTS FOR TIMBER CONSTRUCTION

### Formsafe Barrier 260



Lightweight, versatile barrier that provides hard-mesh coverage with impact-absorbing capacity. Each weld can withstand a force of 500kg. Designed with closed return for greater debris containment, and with reinforced edges to prevent site damage. Guardrails, toeboard and debris mesh in one product.

### Formsafe Barrier 130



Lightweight, versatile barrier that provides hard-mesh coverage with impact-absorbing capacity. Each weld can withstand a force of 500kg. Designed with closed return for greater debris containment, and with reinforced edges to prevent site damage. Guardrails, toeboard and debris mesh in one product.

### Verti Clamp



Bolts to beam edges in timber construction projects to provide up to 360mm offset for safety post attachment

### Stair Attachment



Designed to support barrier on stairways cassettes, Combisafe Stair allows quick, easy and secure attachment to diagonal cassette edges, while providing an offset of 9cm from stair edge to allow room for finishes and nosings.

### Variable Angle Attachment



Provides adjustable post mount angle from 0 to 90 degrees on pitched or flat roofs, slabs, slab edges and walls.

### Multi Clamp



Versatile attachment covering a wide range of applications.

Can be used horizontally or vertically over thicknesses ranging from 20mm to 500mm

### Timber Beam Attachment



Used to attach to timber soffit form beams and proprietary forming systems.

Two models available for form beams with flange thicknesses of 40mm and 60mm.

### Flexi Attachment



Provides a post attachment at an adjustable offset up to 360mm on a vertical surface for beam webs, walls, facades and shaft sides of slab edges

### Vertical Tube Attachment



Used to fix edge protection on vertical circular tubes. Two models available - 48mm with coupler for scaffold tubes, and a 76mm coupler

### Balcony Attachment



Designed to use cast in channels or the fixings for permanent handrails. Includes fixing slots that accommodate large variations in diameter and spacing

# COMBISAFE BARRIER SYSTEM

## COMPONENTS FOR TIMBER CONSTRUCTION

### Bridge Attachment



Used as edge protection for bridges, using the bolts for the permanent bridge barrier. Can also be used for other applications

### Eaves Attachment (Adjustable)



Adjustable attachment for roof edge protection. The adjustable post holder gives positioning flexibility.

Used together with Telescopic Arm or Rear Support

### Eaves Attachment (Adjustable Extension)



Similar to the Eaves Attachment Adjustable, but featuring a larger Telescopic Arm, allowing more flexibility for post location.

### Jamb Attachment



Provides a clear floor by fitting to vertical surfaces like slab edges, upstands, walls, shaft sides and reveals.

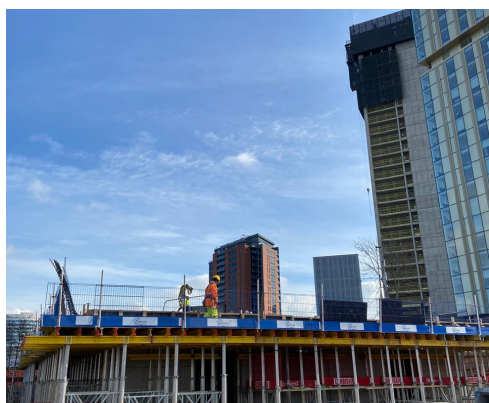


# COMBISAFE BARRIER SYSTEM

## EDGE PROTECTION FOR TIMBER CONSTRUCTION

Product Detail	Information
Barrier Lengths	130   260 cm
Barrier Heights	115 cm
Mounting System	Balcony Attachment   Bridge Attachment   Eaves Attachment Adjustable   Eaves Attachment Adjustable Extension   Flexi Attachment   Jamb Attachment   Multi Clamp   Stair Attachment   Timber Beam Attachment   Verti Clamp   Variable Angle Attachment   Vertical Tube Attachment
Application Range	Concrete slab   concrete stairs   concrete balconies   slab formwork   steel joists
Relevant norms	EN13374 A, B and C
Special features	<ul style="list-style-type: none"><li>• Closed Toeboard</li><li>• Reinforced edges</li><li>• Steel mesh protection with impact absorbing capacity</li><li>• Weighs under 20kg</li></ul>

### Advantages



Lightweight, versatile system  
for speedy erection



Quick to disassemble without  
specialist skills on-site.



Meets all European regulations  
for edge protection.