

ALUMINIUM BEAMS WALING BEAMS



Formwork Direct International offer two types of aluminium beams each with varying properties that cover a range of applications.

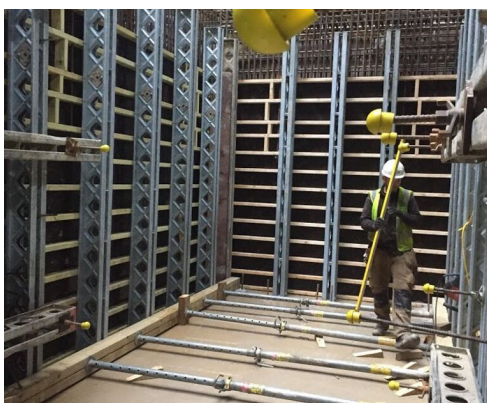
T225 and T150 beams are supplied with timber inserts to allow for plywood to be fixed. They are ideal when a combination of high loading and larger support centres are required.

Aluminium is lighter and stronger than timber and therefore allows for larger assemblies of formwork which in turn reduces the labour cost of fixing and erecting.

ALUMINIUM BEAMS WALING BEAMS

Product Description	Heading
Dimensions	T225: 10 x 225 cm T150: 80 x 1.5 cm
Weight	T225: 8.92 kg/m T150: 5.43 kg/m
Standard Lengths	T225: 300 360 T150: 120 180 240 300 360 420 480 540 600 720 cm
Moment of Resistance	T225: 29.25 kNm T150: 13.00 kNm
Standard Connection	T Bolt Clamp (to Fork Head) Universal Clamp
Application	T225: Primary Waling Beam T150: Primary/Secondary Waling Beam

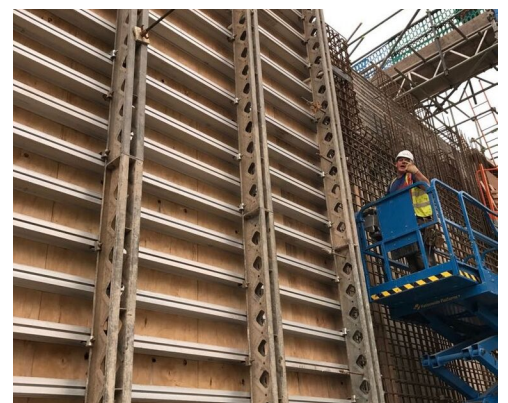
Advantages



Lighter than timber which enables faster and larger formwork assembly



Highly compatible with a variety of systems.



Highly Durable with a longer life.