

ALUFLEX SLAB FORMWORK SYSTEM

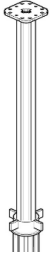


Formwork Direct Aluflex delivers a cost saving lightweight shoring system or provides a heavy duty single prop. The system is used in the construction of high rise concrete frame buildings, under pass tunnels, storage tanks, shaft shutter support platforms and various other applications.

The Aluflex system is a high load capacity formwork system for the support and forming of suspended concrete slabs. The systems basic components are the Alulight Multiprop, the Aluflex 105 Bracing Frame with primary and secondary beam options. The primary beams being secured to the prop heads with steel clips or held in a steel fork head.

ALUFLEX COMPONENTS

Alulight Multiprops



Alulight Props (BS EN 16031) are heavy duty aluminium props for use as an individual prop, table prop or in shoring towers.

Manufactured from Aluminium alloys with very high yield strength ($R=300N/mm^2$) guarantee high capacity load and lightness.

H2O Timber Beams



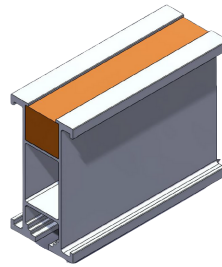
H2O Beams are formwork beams made of the highest quality European spruce wood, and ensures high-quality panelling of concrete formwork constructions. They are 20 cm high and are produced in various standard lengths.

Alulight Steel Frames



Steel connecting frames are made in several different sizes meaning props can be assembled as towers with pre-determined prop centres to suit different slab thicknesses.

Aluminium Beams



High-strength aluminium alloy which can be recycled at no cost and enables high residual value.

The beam section has a multi-function track-shaped profile in the lower part that enables the connection of different accessories.

Forkhead



The 4-way Fork head is placed on top of a prop to hold H2O timber beams, aluminium beams and steel soldiers in place as a primary bearer. It can be used in either direction depending on the size of the beam in use.

Alulight Fixed Coupler



Scaffold couplers are used to attached scaffold tube to the Alulight props in place of or alongside the steel frames. This allows the user more flexibility with prop spacings and can also be used as bracing to restrain horizontal loadings too great for the steel frames.

Alulight Swivel Coupler



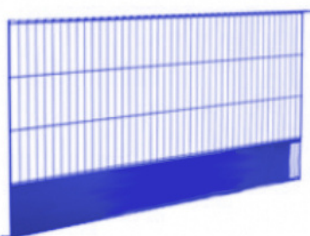
Scaffold couplers are used to attached scaffold tube to the Alulight props in place of or alongside the steel frames. This allows the user more flexibility with prop spacings and can also be used as bracing to restrain horizontal loadings too great for the steel frames.

H2O Beam Clamp



H2O beam clamps are used to connect the primary beam to the secondary beam, and are generally placed at either end of the secondary beam to prevent overturning. They can also be used to create tables on the ground that can then be lifted into position using a crane.

Formsafe Barrier 130/260



Lightweight, versatile barrier that provides hard-mesh coverage with impact-absorbing capacity. Each weld can withstand a force of 500kg. Designed with closed return for greater debris containment, and with reinforced edges to prevent site damage. Guardrails, toeboard and debris mesh in one product.

ALUFLEX COMPONENTS

Timber Beam Attachment



Used to attach to timber soffit form beams and proprietary forming systems.

Two models available for form beams with flange thicknesses of 40mm and 60mm.

SMB Holder



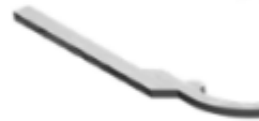
The Steel Mesh Barrier Holder allows the barrier to be installed at any height on the Safety Post, facilitating work under the barrier, and enabling the barrier to be parallel with the working surface at all times.

Safety Posts



When mounted in the various attachments and combined with the Steel Mesh Barrier, forms a safe fall prevention solution. Can be used on its own or with the Steel Mesh Barrier Holder.

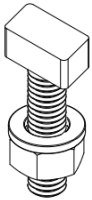
Alulight Spanner



The Alulight spanner is used to safely and quickly release the Alulight prop collar.

It can be operated by one person and due to the length of the handle it requires a minimal amount of torque.

T Bolt



A complete assembly used to fix T225 and T150 aluminium beams to Alulight Props.

Two required per prop.

Universal Clamp



Connects secondary beams to primary beams. Recommended where forms are to be handled repeatedly or are likely to be subject to considerable vibration.

ALUFLEX SLAB FORMWORK SYSTEM

Product Description	Heading
Standard Props	Alulight Multiprops
Prop Heights	120 250 350 480 cm
Steel Frame Lengths	75 100 150 200 cm
Steel Frame Connection	Integrated Hammer Wedge
Timber Beam Lengths	195 245 265 290 330 360 390 450 490 590 cm
Beam Width	8 cm
Beam Connection	Beam Clamp
Max Leg Load	100 kN
Special Features	4 basic components High leg load capacity Steel Frame connection Integrated safety with Formsafe Edge Protection

Advantages



Different slab thickness and structural shapes can be effectively dealt with.



Props can be used in a grid arrangement, individual towers or in single prop applications.



Frames can be used to support access platforms as well as to provide a guard rail around the platform.