

FD MAX HEAVY DUTY PANEL SYSTEM



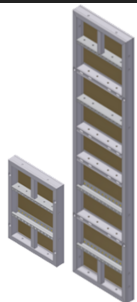
The FD Max panel is a heavy duty wall formwork system capable of taking loads up to 90kN m^2 . The system is used in all areas of construction i.e., civil engineering, building and infrastructure projects of all types.

The standard $3000\text{mm} \times 2400\text{mm}$ panel is complemented by a range of fractional panel sizes which allow for all shutter heights and lengths.

The panels are simply and quickly assembled using the standard assembly clamp. The clamps fit anywhere on the perimeter frames allowing panels of any size to be connected together safely and efficiently.

FD MAX COMPONENTS

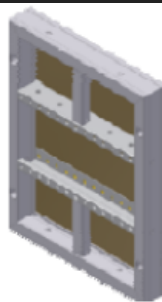
Standard Panels



Standard Panels feature a perimeter frame manufactured from high grade hollow steel sections of 120 x 60 mm.

They have a series of horizontal sections with multiple fixing points for accessories and plumbing struts.

Universal Panels



FD MAX universal panels have a series of holes at 50mm centres and are used especially for shuttering of columns or as an alternative corner arrangement.

Inside Corners



The FD Max system features three corner components that allow a wide range of solutions to handle any requirements on site.

All corners are available in 3.00m and 1.00m heights.

Outside Corners



The FD Max system features three corner components that allow a wide range of solutions to handle any requirements on site.

All corners are available in 3.00m and 1.00m heights.

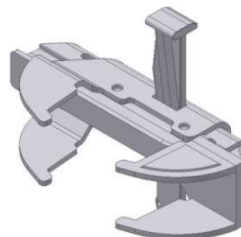
Hinged Corners



acute and obtuse corners can be formed using FD Max hinged corners.

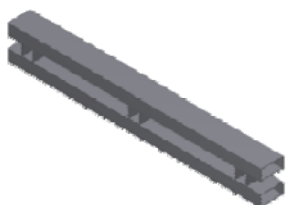
When hinged corners are used on the inside they form a minimum angle of 55° and when used on the outside the maximum angle is 112°

FD Max Clamp



Fits quickly and securely by tapping home a fixed gravity wedge.

Walers



For use in supporting stop end shutters

Profile Fixing Bolt



Used for fixing accessories to panel frames.

Stop End Fixing Bolt



Used for fixing accessories to panel frames.

Slope Plate



For use with Ø15mm threadbar. The Slope Plate features a wingnut the is undetachable from the plate.

The articulation of the wingnut is approx. 15°.

FD MAX COMPONENTS

Dywidag Threadbars



Come In various lengths to suit wall thicknesses.

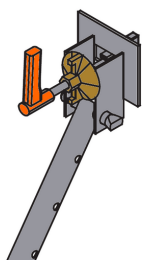
Push Pull Props



The FD Max system makes use of Push-Pull 340 and the Push-Pull 540 props for all shutter heights up to 6.00m.

These props can be telescoped in 10cm increments and then finely adjusted using the screw-thread.

Push Pull Prop Head



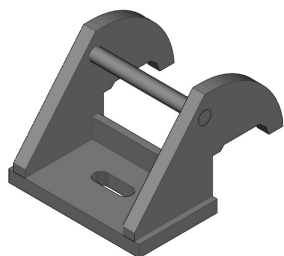
The Push-Pull props are mounted to the panel using the Push-Pull Prop Head.

FD Max Anchoring Bracket



Allows form ties to be placed above perimeter frame.

FD Max Uplift Bracket



The FD Max Uplift bracket fits on to the perimeter frame of the panel and is fixed to the base using an M16 Excalibur bolt.

The fixing position is a slot to allow adjustment on the position of the bolt to avoid clashes with the reinforcement bars.

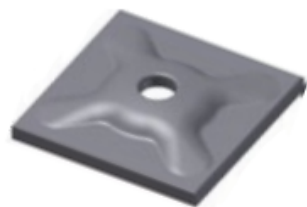
FD Max Lifting Hook



Safe crane-handling of the FD Max panels is possible using the FD Max Lifting Hooks.

The lifting hook locks automatically after being hung into place.

Pressed Waler Plate



The Waler Plate is used in conjunction with the Wingnut for load transfer.

Wingnut 20mm



For use with Ø20mm threadbar.

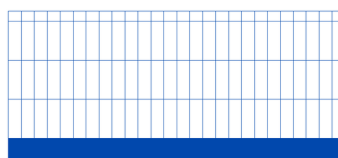
The Wingnut can be fixed or loosened using a hexagon wrench or threadbar, with clamping affect obtained or overcome with hammer strokes.

FD Max Access Bracket



Fixes to panel frames to provide a safe working platform

Combisafe Barrier



Lightweight, versatile barrier that provides hard-mesh coverage with impact-absorbing capacity. Each weld can withstand a force of 500kg. Designed with closed return for greater debris containment, and with reinforced edges to prevent site damage. Guardrails, toeboard and debris mesh in one product.

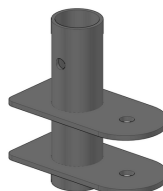
FD MAX COMPONENTS

SMB Holder



The Steel Mesh Barrier Holder allows the barrier to be installed at any height on the Safety Post, facilitating work under the barrier, and enabling the barrier to be parallel with the working surface at all times.

FD Max Post Socket



Safety Posts



When mounted in the various attachments and combined with the Steel Mesh Barrier, forms a safe fall prevention solution. Can be used on its own or with Steel Mesh Barrier Holder. Available in a variety of lengths.

FD MAX

HEAVY DUTY PANEL SYSTEM

Product Description	Heading
Standard Panel Widths	30 45 60 90 100 120 240 cm
Panel Heights	100 300 cm
Universal Panel Widths	55 75 95 135 cm
Profile Thickness	12 cm
Form Lining	Alkus Plywood
Lining Thickness	18 mm
Average Weight	45 to 65 kg (Including connection parts)
Max Concrete Pressure	90 kN/m ²
Corrosion Protection	Fully galvanized
Standard Connection	FD Max Clamp
Inside Corners	30 x 30 cm
Hinged Corners	55° - 112°
Outside Corners	12 x 12 cm
Special Features	High quality form lining on panels Integrated safety with Formsafe Edge Protection High load capacity enables quicker pours

Advantages



Capable of taking loads of up to 90kN



One large panel can cover 7.2m squared



Available with Alkus form lining for smoother results.