

# H2O TIMBER BEAM FORMWORK BEAMS



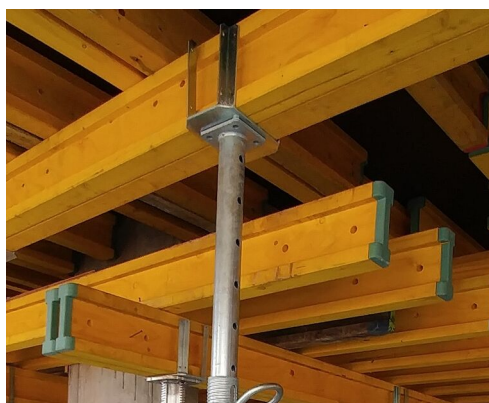
Formwork Direct H2O beams is the strongest and lightest formwork beam made of engineered spruce wood. Our formwork beams are produced in various standard lengths.

With the Chords made of high-quality and graded massive finger-jointed timber, the Webs made of 3-ply laminated wood panels, and an optional protective cap that prevents the beam from being exposed to premature chipping on the chord ends, Formwork Direct H2O beams ensures sustainability and durability in all climate zones.

# H2O TIMBER BEAM FORMWORK BEAMS

Product Description	Heading
Timber Beam Lengths	195   245   265   290   330   360   390   450   490   590 cm
Wood Type	Spruce
Weight	4.5 kg/m
Wood Protection	Water repellent colour glaze
Support	Can be cut to any size
Beam Height & Tolerance	200 mm   $\pm 2$ mm
Chord Height & Tolerance	40mm   $\pm 0,6$ mm
Chord Width	80mm   $+ 0,8$ mm / $- 1,2$ mm
Web Thickness	28mm   $\pm 1$ mm
Moment of Resistance	5.0kN/m
Bending Stiffness	450kN/m <sup>2</sup>
Shear Load	11.0kN
Bearing Load	22.0kN
Application	Primary Beams Secondary Beams

## Advantages



The web is made of 3-ply solid wood panel, ensuring high carrying capacity and durability in all climate zones



Formwork Direct H2O beams are made of Spruce wood.



A special shock-resistant, plastic protective caps prevent mechanical injuries, and increases its durability.