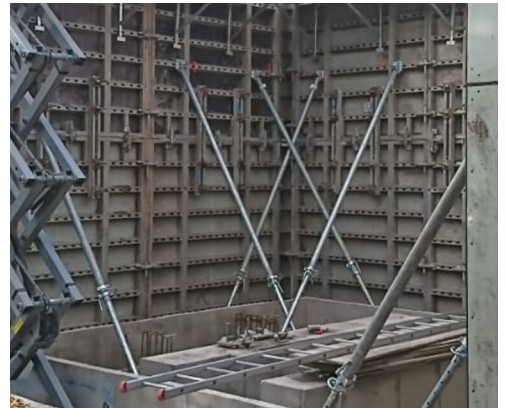
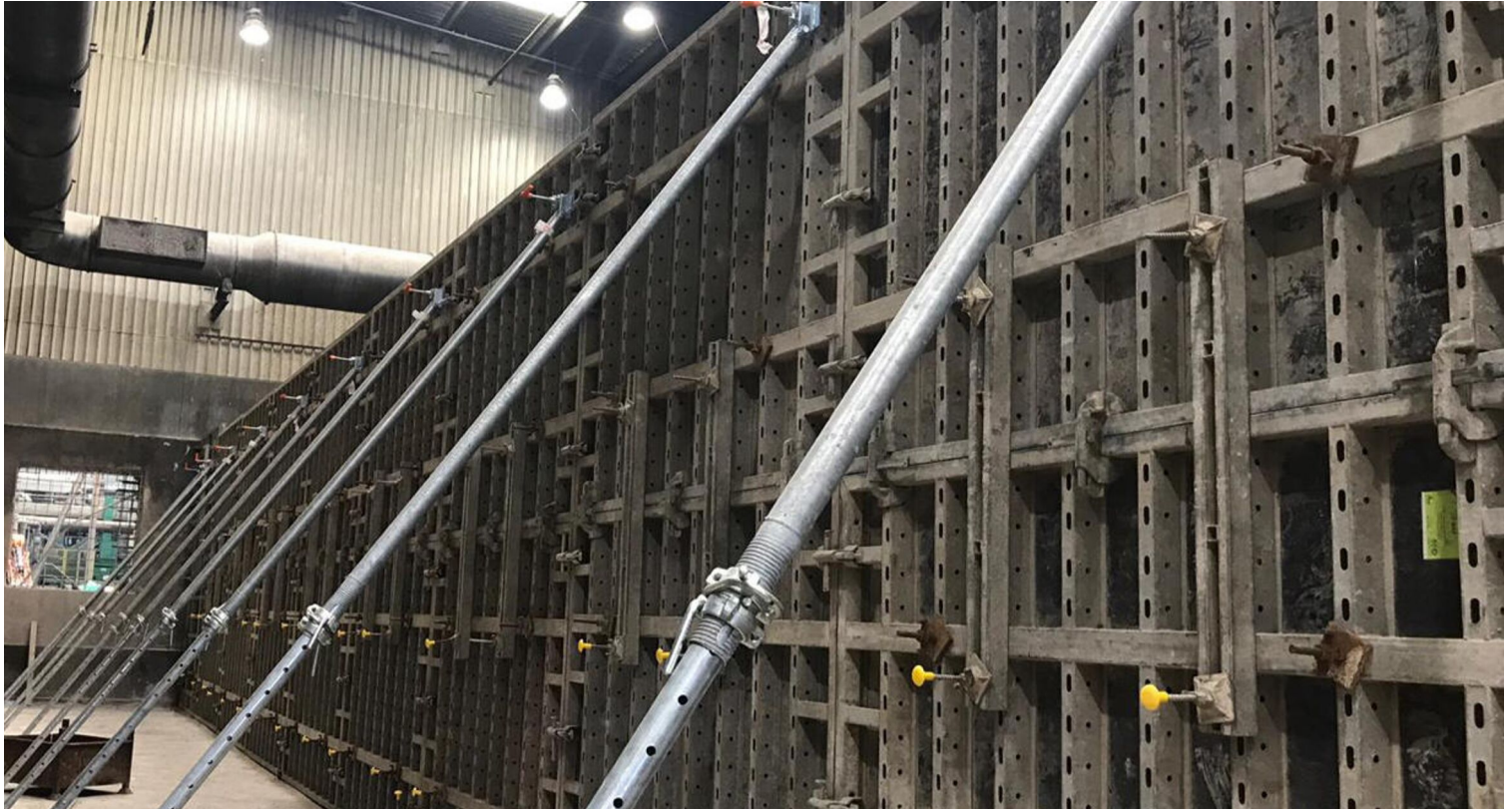


# PUSH PULL PROPS

## UNIVERSAL PROPPING



Formwork Direct push pull props can be used in all possible cases to support prefab elements, standard system formwork and steel during construction.

Our push pull props offer a variety of props for traction and pressure forces.

An array of accessories can be attached to the props that result in high flexibility, Time efficiency, easy mounting and last but not least a high level of security and safety on site.

# PUSH PULL PROPS

## UNIVERSAL PROPPING

Product Description	Heading
Prop Heights	340   540 cm
Max load	35.4 kN
Adjustment range	2.15m (340) up to 5.40m (540)
Weight	17.10   30.00 kg
Corrosion protection	Fully galvanized
Setting and adjusting	Quick setting via pegging holes   Fine tuning
Compatible with	FD MAX   Frami   MKII and Alu Beam

### Advantages



Features telescopic design and low weight for easy handling.



Versatility enables options for faster length adjustment due to rough setting and fine tuning.



Ideal bracing solution for formwork panels.