

FAST DECK SLAB FORMWORK

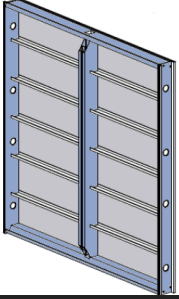


Fastdeck is a modular slab formwork system with only two basic components, props and panels. This enables fast and safe erection with minimal labour.

One panel can form an area of up to 3.24m² which can be erected (and stripped) from the ground in 3 simple steps.

FAST DECK COMPONENTS

Topec Panels



Aluminium frame, shuttering skin consists of 11 mm full-plastic sheets with integrated 10 mm thick shuttering skin, bonded 7-ply multiplex veneer.

3,24 m² formwork with each panel reduces the number of parts and enables quick forming.

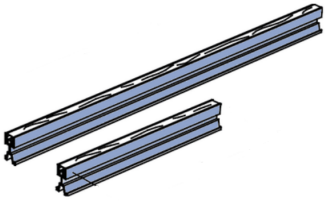
FDP Euro Props



FDP Euro Props 30kN are type tested to BS EN 1065 and offer a high load bearing capacity of up to 30kN.

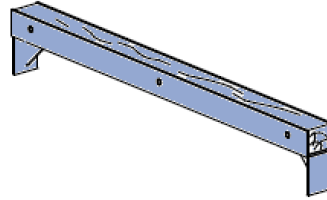
The props feature numbered pegging holes for easier height adjustment and quick connection.

Topec Adjustment Beam



The aluminium Adjustment Beam with integrated timber nailing strip can be used as an alternative to the Head Support Shoe with a squared timber. This beam is simply positioned on the Bearing.

Topec Transverse Beam



The Transverse Beam is used for adjustment purposes within the modular grid (90 cm) of the Topec Panel.

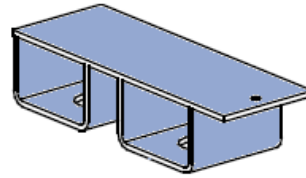
FDP Tripod



FDP Tripods are removable folding tripods for holding FDP Euro props upright.

FDP Tripods feature swing-out legs which allow flexible placement in constricted situations.

Topec Head Support Shoe



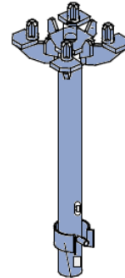
Used to adapt to the dimensions of the building in steps of 15 cm using the different panel widths. The remaining areas can be formed easily with a range of accessories to adapt the panel layout to the floor plan. 21 mm thick plywood for the infill sections has to be provided and cut-to-size by site.

Fast Deck Erection Rod



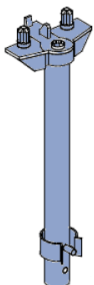
Used to erect the Fast Deck system quickly and efficiently.

Fast Deck Bearing



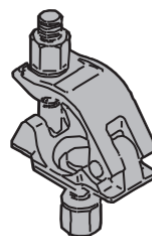
Slots into FDP Euro Props and is used to hold and connect panels.

Topec Edge Support



Similar to the Fast Deck Bearing but used on the edges of the structure.

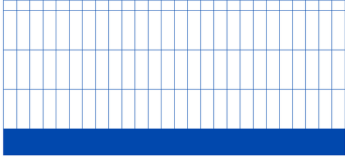
Half Coupler



Scaffold couplers are used to attached scaffold tube to the FDP Euro Prop, this allows the user more flexibility with prop spacings and can also be used as bracing to restrain horizontal loadings as and when needed.

FAST DECK COMPONENTS

Combisafe Barrier



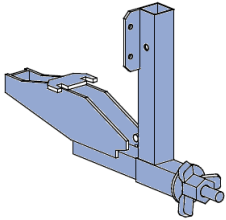
Lightweight, versatile barrier that provides hard-mesh coverage with impact-absorbing capacity. Each weld can withstand a force of 500kg. Designed with closed return for greater debris containment, and with reinforced edges to prevent site damage. Guardrails, toeboard and debris mesh in one product.

Combisafe Safety Post



When mounted in the various attachments and combined with the Steel Mesh Barrier, forms a safe fall prevention solution. Can be used on its own or with the Steel Mesh Barrier Holder.

Fast Deck Shoe Attachment



Used to connect Edge Protection to cantilevering panels.

SMB Holder



The Steel Mesh Barrier Holder allows the barrier to be installed at any height on the Safety Post, facilitating work under the barrier, and enabling the barrier to be parallel with the working surface at all times.

FAST DECK SLAB FORMWORK

Product Description	Modular Slab Formwork
Panel Widths	45 60 75 90 180 cm
Panel Lengths	90 180 cm
Adjustment Panel	55 - 90 x 90 cm 55 - 90 x 180 cm
Profile Thickness	14 cm aluminum frame profile
Form Lining Types	Alkus plastic lining Plywood (340 g/m ²)
Form Lining Thickness	11 mm Alkus 10 mm plywood
Weight per Panel	Panel 180 x 90 cm = 22.2kg Panel 180 x 180 cm = 47.1kg
Relevant DIN norms	Complies with DIN 18202
Max Slab Thickness	75 cm (with 60 cm wide panels)
Corrosion Protection	Powder-coating
Standard Shoring	FDP Euro props 20 kN 30 kN
Special Shoring	Alulight Props
Bearings	Fast Deck bearing Edge support N Drop head
Assembly/Stripping Times	t = 0.2 - 0.4 h/m ² *
Special Features	Adjustment panels (fully telescopic) Alkus plastic composite form lining FDP Euro Props with quick-lowering mechanism

Advantages



Robust yet lightweight aluminum design provides easy and ergonomic handling



Safe forming and stripping up to a height of 3.5 m from the ground in 3 easy working steps



Large panels of 180 x 180 cm covers a forming area of 3.24 m²