

KWIKSTAGE ACCESS SCAFFOLDING SYSTEM



Kwikstage Access Scaffolding is the ideal solution for efficient and safe construction support. Designed to be quick and simple to erect, it features a spacious plan area of 1.8m by 4.2m, ensuring ample workspace for your project needs. The scaffolding includes a landing that is 1.2m wide, complemented by a 0.75m wide staircase, providing safe and convenient access for workers. Only 10 components are required to erect a full system.

The system significantly improves site productivity with its ability to facilitate quick movement of labor. The stairways are equipped with non-slip treads to enhance safety, while the standard components and lightweight aluminum staircases make the erection process straightforward and manageable. Kwikstage Access Scaffolding combines practicality and efficiency, making it an essential asset for any construction site.



KWIKSTAGE ACCESS SCAFFOLDING SYSTEM



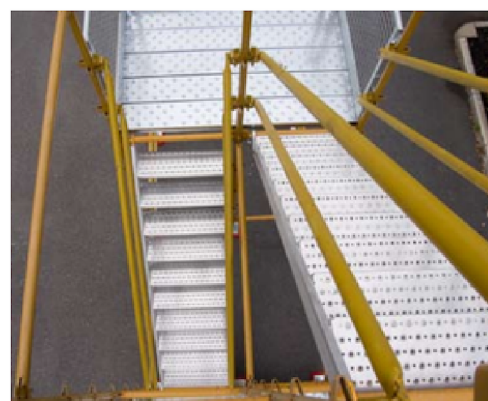
Advantages



Provides ideal Access for all site personnel.



Complete access and egress solution for 50 metre high towers.



Five boarded landing area for maximum safety.