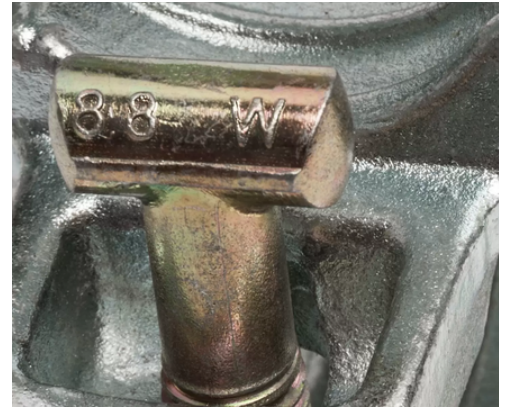


SCAFFOLD TUBE

SCAFFOLD FIXINGS



Scaffold tube is the preferred structural element of modern scaffolding used worldwide today. It is extensively utilized in its raw length form along with loose fittings and scaffold boards to create access or support structures of various shapes and sizes. Since their introduction, advancements in manufacturing and engineering have significantly evolved the scaffold tube, resulting in a multitude of possibilities for construction applications.

Scaffold fittings, also known as scaffolding clamps or scaffolding couplers, are essential components used alongside scaffold tubes and other equipment. These fittings enable the formation of both simple and complex structures, providing crucial access and support for various types of construction work. Their versatility and reliability make them indispensable in the scaffolding industry.

SCAFFOLD TUBE SCAFFOLD FIXINGS

Drop Forged Single Coupler



Primarily used to connect scaffold tubes at right angles in a non load bearing capacity such as transom tubes to ledger tubes to support Scaffold boards on a conventional scaffold structure.

Weight: 16.5kg

Drop Forged Double Coupler



Used to connect scaffold tubes at right angles, usually when a standard meets a ledger.

Weight: 27.5kg

Drop Forged Swivel Coupler



Used to connect scaffold tubes at any angle, securing the scaffolding in place.

Weight: 28.75kg

Scaffolding Sleeve Coupler



Primarily used to connect scaffold tubes end-to-end, to allow for larger scaffolding structures to be constructed.

Weight: 22.4kg

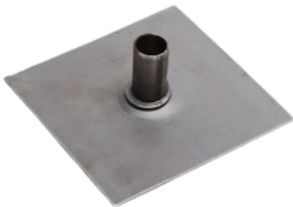
Lay Flat Fitting



Klawz Scaffold Fitting



Scaffolding Base Plate



Made from 3mm mild steel and used at the very base of the scaffold structure to ensure a secure and even placement of scaffold tube.

EN74 Scaffolding Base Plate



Supplied to EN74/BS1139 Standard. 5mm Scaffolding base plates are for use at the base of the scaffold structure to ensure secure and safe placement of Scaffolding tube.

Pressed Steel Single Coupler



Used to connect Scaffolding Tube at right angles in a no load bearing capacity such as transom tubes to ledger tubes to support Scaffold Boards on a conventional scaffold structure.

Pressed Steel Double Coupler



Used to connect Scaffold Tube at a 90D angle, most commonly when a standard meets a ledger. Pressed steel construction with a zinc plated exterior for long life.

SCAFFOLD TUBE SCAFFOLD FIXINGS

Pressed Steel Swivel Coupler



Scaffold Swivels are used on scaffold structures to join Scaffold Tubes at any angle, through 360. Most commonly when bracing is required throughout the scaffold structure. Pressed steel construction with a zinc plated exterior for long life.

Drop Forged Joint Pin



Supplied to EN74 specification, the Drop Forged Joint Pin is an internal scaffold coupler to join two lengths of Scaffold tube when tube is used vertically.

Forged steel construction with a zinc plated exterior for long life.

Drop Forged Half Fitting



Supplied to EN74, class A Standard. The Drop Forged Half Fitting have many uses and is most commonly used for bolting to existing or pre-fabricated items to enable connection of Scaffold tube.

Gravlock Girder Coupler



Supplied to AS-15762.2-1991 the Gravlock Girder Coupler are used in pairs to enable Scaffold tube and structures to be anchored to steel I beams with upto a 45mm flange capacity.

Swivel Gravlock Girder Coupler



Supplied to AS-15762.2-1991 the Swivel Gravlock Girder Coupler are used in pairs to enable Scaffold tube and structures to be anchored to steel I beams with upto a 45mm flange capacity. The Swivel Gravlock Girder Coupler allows tube to be used through 360degrees

Oversize Gravlock Girder Coupler



Supplied to AS-15762.2-1991 the Oversize Gravlock Girder Coupler are used in pairs to enable Scaffold tube and structures to be anchored to steel I beams with upto a 63mm flange capacity.

Band and Plate Coupler



Used to connect tubes at a 90D angle, can also be used as a Scaffold Fixing when combined with our range of Excalibur Screwbolts.

Can be supplied with a range of washers to suit one hole or two hole Band & Plate Coupler.

Putlog Head Adaptor



Putlog Head Adaptors are an easy way of converting Scaffolding tube to Putlog tubes for use on Putlog Scaffolds.

Pressed steel construction with a zinc plated exterior for long life.

Scaffolding Friction Clamp



Used extensively offshore, here in the UK and Internationally. Used on tubular steel work it can be fitted to horizontal, inclined or vertical members of any diameter from 500mm upwards to enable Scaffold tube and structures to be built from them.

Jordan Safety Clamp



Accredited to BS EN795. The Jordan Clamp provides a safe and reliable, above head anchor point for a scaffold operative, where and whenever required. The Jordan Clamp fixes direct to the Scaffold Tube with no special tools required

SCAFFOLD TUBE SCAFFOLD FIXINGS

Scaffolding Tube Clamps



Used in a wide range of applications to construct handrails, edge protection and it has been known office furniture along with much more. Tube Clamps provide a cleaner finish than conventional Scaffold Fittings

Scaffolding Oyster Coupler



Supplied to BS1139, the Scaffolding Oyster Coupler has many names within the industry and is normally used when requiring a flush finish to scaffold platforms.

Scaffold Hook Coupler



The Scaffold Hook Coupler is a highly versatile scaffold fitting which conforms to EN74 Specification. When used with our Excalibur ties it offers tie options anywhere along the scaffold structure.

Scaffolding T Bolt



The Scaffolding T Bolt, Nuts and Washers are supplied to replace damaged and worn parts on the range of Scaffold Fittings.

Scaffolding Roofing Coupler



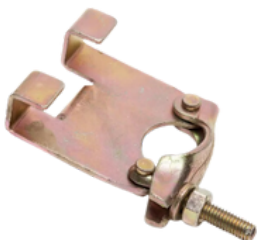
Supplied to BS1139, Scaffold Roofing Couplers are used to secure CI Sheets (sometimes referred to as Wrigley tin/corrugated sheets) to scaffold tube when construction a temporary or semi permanent roof structure with Scaffolding Tube and Scaffold Couplers.

Double Sided Ladder Clamp (Round Edge)



The Ladder clamp Double sided (round edge) are supplied BS1139 and suitable for a wide range of Steel Scaffold Ladder types due to the double sided nature of the fitting.

Double Sided Ladder Clamp (Square Edge)



The Ladder clamp Double sided (Square edge) are supplied BS1139 and suitable for a wide range of Steel Scaffold Ladder types due to the double sided nature of the fitting.

Prop Bracing Double Coupler



Supplied to EN74-1, Class B Specification, our Prop Bracing Double Coupler is used to fix Scaffold tube to Adjustable props as a means of bracing at 90Degrees.

Pressed Steel Half Coupler



Supplied to EN74, class A Standard, Pressed Steel Half Couplers have many uses throughout the scaffolding industry along with construction and fabrication. Most commonly used for bolting to existing or pre-fabricated items to enable connection of Scaffold Tube.

Pressed Steel Board Retaining Coupler



Pressed Steel Board Retaining Couplers are used to secure Timber Scaffold boards to the transom below. Sometimes referred to as a left/right board clip as it secures two boards by its unique design. Can also be used in other applications, such as securing Steel temporary Hoarding panels to Scaffold Tube

SCAFFOLD TUBE

SCAFFOLD FIXINGS

Drop Forged Board Retaining Coupler



Supplied to BS1139, Drop Forged Board Retaining Couplers is used to secure Timber Scaffold boards to the transom below.

Sometimes referred to as a left/right board clip as it secures two boards by its unique design.

Pressed Steel Timber Hoarding Coupler



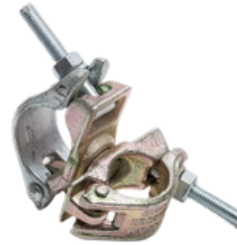
Supplied to BS1139, Pressed Steel Timber Hoarding Couplers are sometimes referred to as a Joist coupler and is an ideal solution to fixing timbers to scaffold tubes such as timber hoarding.

Scaffolding Limpet Clamp



Supplied to BS1139 standard, the Scaffolding Limpet Clamp is the original Scaffold Board Retaining coupler, used to secure Scaffold boards to the transom beneath by way of tightening the 7/16" nut into the Limpet clamp.

Prop Swivel Scaffolding Fitting



Supplied to EN74-1, Class B Specification, Prop Swivel Scaffold Fittings are used to fix Scaffold Tube to Adjustable Props as a means of bracing the Adjustable props with Scaffold tube at varying angles, through 360 degrees.

Scaffold Fitting Armadillo



The Armadillo has been developed to cover standard scaffold fittings by snapping over the scaffold tube on either side of the fitting, protecting personal using the scaffold from exposed threads. The covers are self retaining.

Scaffeeze Oil



Scaffeeze Oil for Scaffold Fittings is used for servicing scaffold fittings and starts to work immediately on contact with the fitting to penetrate and free all seized parts whilst also removing rust, scale and algae. Can be used in a spray bottle or dip tank.

Scaffolding Clip Lube



Used for lubricating and servicing scaffold fittings, whilst also leaving a protective coating on them.

Acrow Prop Pin and Chain



The Acrow Prop Pin & Chain, used on Adjustable Props to secure the prop length when in use. Will fit a wide range of props including push/pull type.

4mm Galvanised Scaffold Tube



This tube has an outside diameter of 48.3mm, a wall thickness of 4mm, weighs approx. 4.37kg/m (1.36Kg/foot), is finished hot dip galvanised and is supplied fully certified to BS EN 39

3.2mm High Yield Scaffold Tube



This unique tube has an outside diameter of 48.3mm, a wall thickness of 3.2mm, weighs approx. 3.56kg/m (1.09Kg/foot), is finished hot-dip galvanised and is supplied fully certified to BS EN 10219-1.

SCAFFOLD TUBE

SCAFFOLD FIXINGS

Aluminium Scaffold Tube



Our aluminium tube has an outside diameter of 48.3mm, a wall thickness of 4.47mm, weighs approx. 1.65kg/m (0.50kg/foot) and conforms fully to BS 1139-1.2.

GRP Scaffold Tube



Often referred to as fibreglass tube, glass-reinforced plastic scaffold tube offers handling and safety benefits on specialist sites where conventional steel tubing is not suitable such as within the food industry, chemical processing plants, electrical sites and radiation hazardous zones.

U Stacker For Scaffold Tube



The U Stacker for Scaffolding Tube is available in two sizes; U Stacker (small) which will accommodate up to 48 lengths of scaffolding tube, and the U Stacker (large) will accommodate 78 lengths of scaffolding tube.

Bolts, Nuts and Pins etc



A variety of bolts and pins and accessories are available to cover all types of applications.